

Common Grackle (*Quiscalus quiscula*)

Number of Priority Blocks with Breeding Evidence

Total: 529 of 585 (90%)

Confirmed: 182 (34%)

Probable: 145 (28%)

Possible: 202 (38%)

Number of Priority Blocks in Ecoregions with Breeding Evidence

Interior Plateau: 52 of 52 (100%)

Southwestern Appalachians: 113 of 124 (91%)

Ridge and Valley: 69 of 72 (96%)

Piedmont: 70 of 76 (92%)

Southeastern Plains: 218 of 254 (86%)

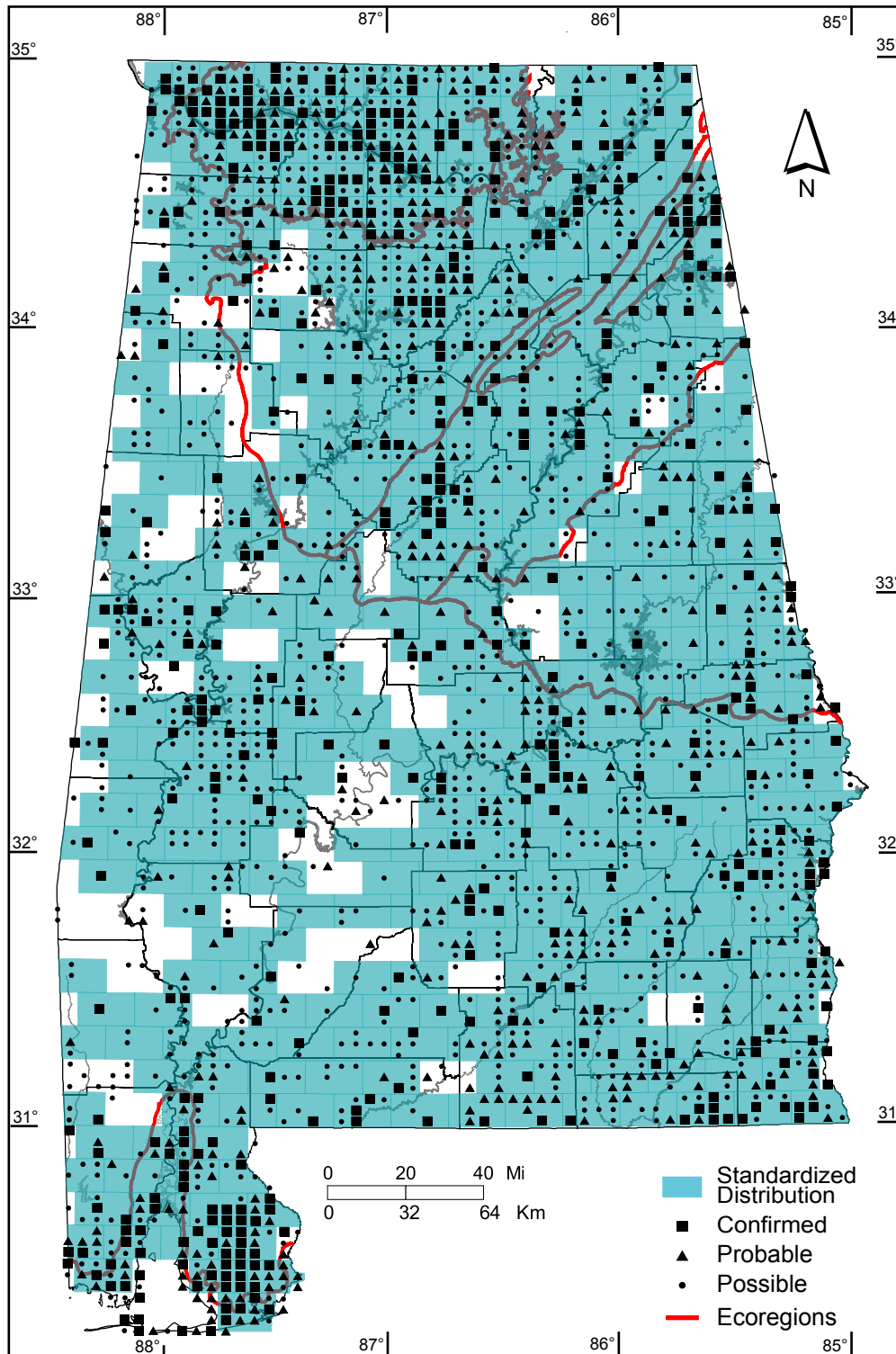
Southern Coastal Plain: 7 of 7 (100%)

Number of Blocks with Breeding Evidence

Total: 2050 of 5087 (40%)

Confirmed: 481 of 5087 (9%)

Safe Dates: April 15 - July 15



©Alabama Breeding Bird Atlas
All Rights Reserved